

# What You Can do if You are at Higher Risk of Severe Illness from COVID-19

## Are You at Higher Risk for Severe Illness?



Based on what we know now, those at high-risk for severe illness from COVID-19 are:

- People aged 65 years and older
- People who live in a nursing home or long-term care facility

People of all ages with underlying medical conditions, particularly if not well controlled, including:

- People with chronic lung disease or moderate to severe asthma
- People who have serious heart conditions
- People who are immunocompromised
  - Many conditions can cause a person to be immunocompromised, including cancer treatment, smoking, bone marrow or organ transplantation, immune deficiencies, poorly controlled HIV or AIDS, and prolonged use of corticosteroids and other immune weakening medications.
- People with severe obesity (body mass index [BMI] of 40 or higher)
- People with diabetes
- People with chronic kidney disease undergoing dialysis
- People with liver disease

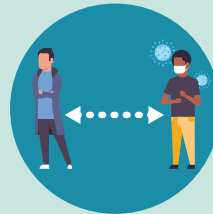
## Here's What You Can do to Help Protect Yourself



**Stay home** if possible.



**Wash your hands** often.



**Avoid close contact** (6 feet, which is about two arm lengths) with people who are sick.



**Clean and disinfect** frequently touched surfaces.



**Avoid all cruise travel** and non-essential air travel.

Call your healthcare professional if you are sick.

For more information on steps you can take to protect yourself, see CDC's [How to Protect Yourself](https://www.cdc.gov/coronavirus/2019-ncov/protect-yourself.html).



[cdc.gov/coronavirus](https://cdc.gov/coronavirus)